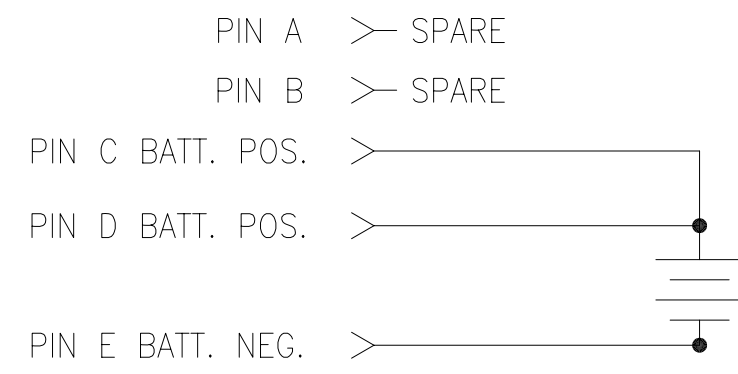
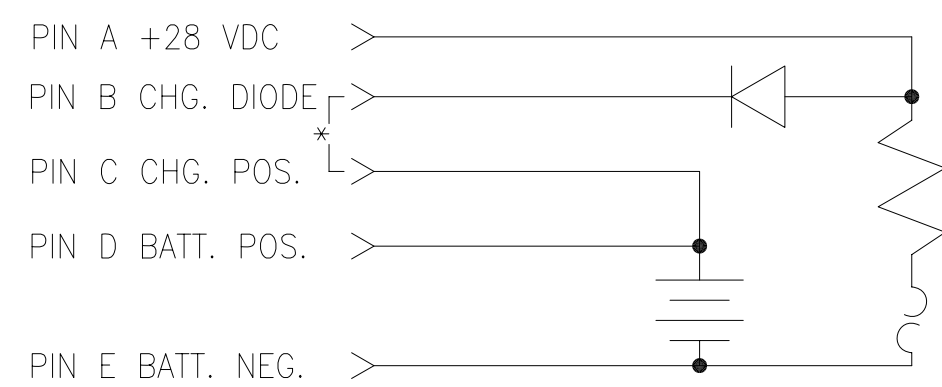


NOTES: UNLESS OTHERWISE SPECIFIED

1. MANUFACTURED AND INSPECTED IAW AS9100 QUALITY SYSTEM REQUIREMENTS.
2. ABBREVIATION USED IN TITLE IS: VALVE REGULATED SEALED LEAD ACID (VRSLA).
3. SEE DRAWING NO. CB-00235 AND PROCEDURE P-1000 FOR ASSEMBLY AND TEST INSTRUCTION. PROCEDURES AND ASSEMBLY DRAWINGS ARE FOR INTERNAL USE ONLY.
4. BATTERIES ARE RATED IAW INTERNATIONAL ELECTROTECHNICAL COMMISSION STANDARD 60952-1 AND RTCA STANDARD DO-293, UNLESS OTHERWISE NOTED.
5. DIMENSIONS ARE IN INCH [MILLIMETER].
6. THIS BATTERY IS NOT RATED FOR "ENGINE STARTING - HIGH RATE PERFORMANCE".

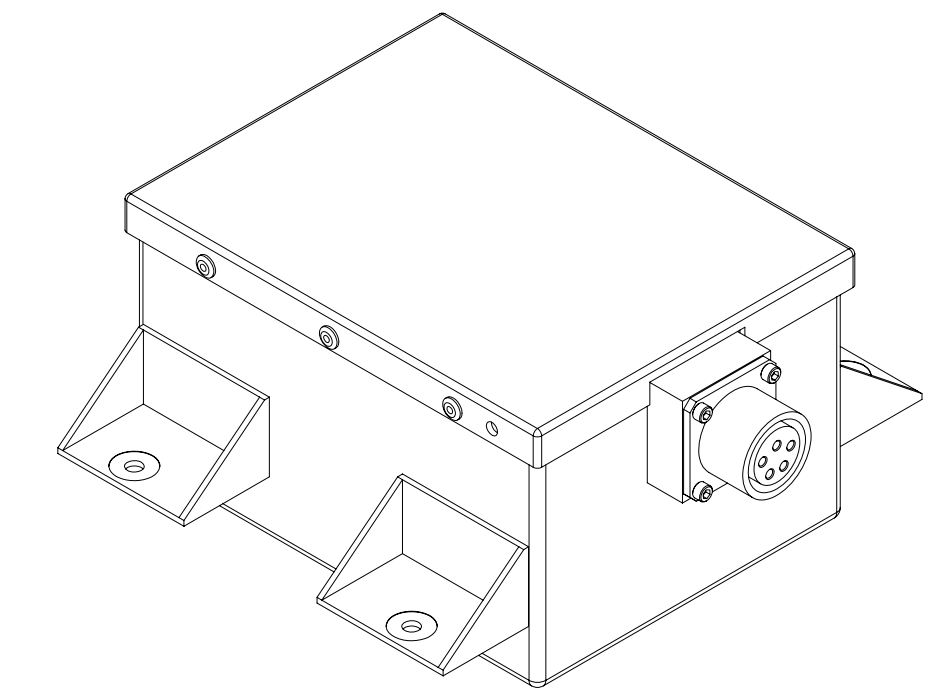
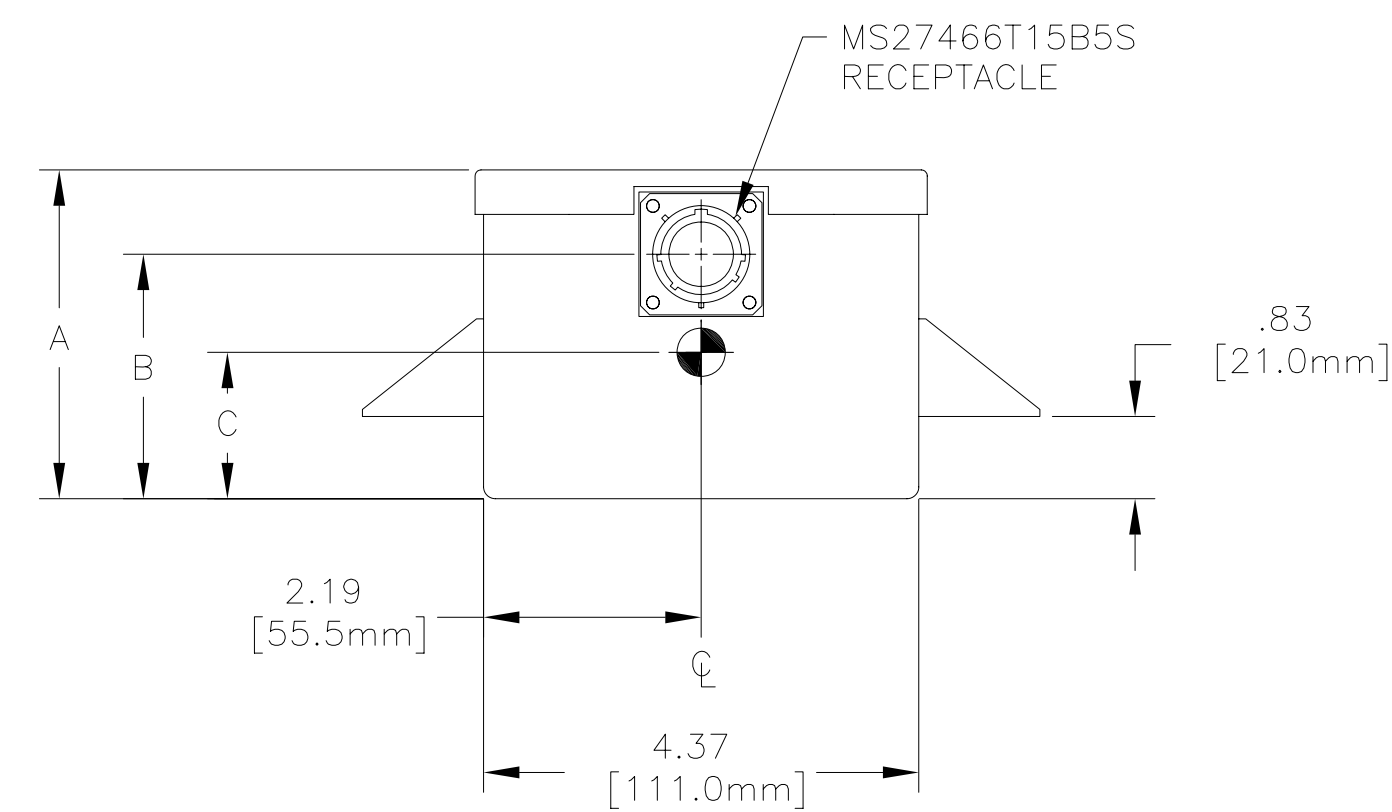
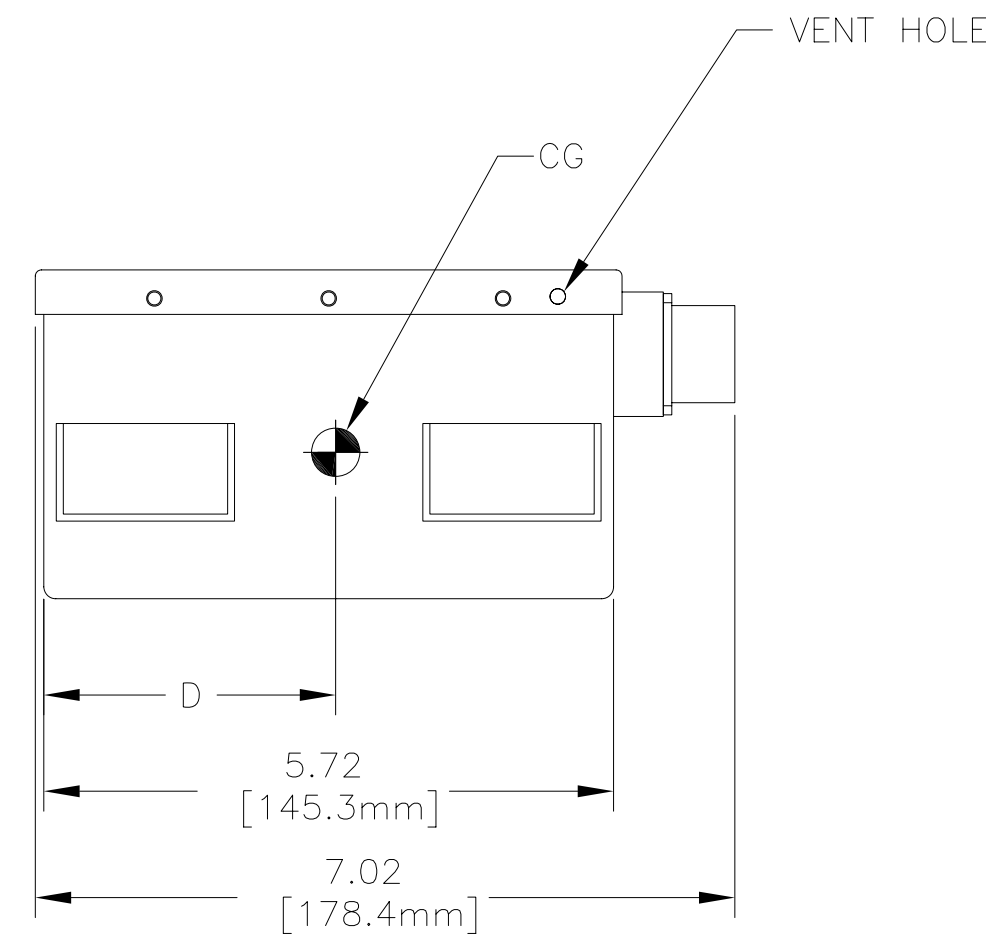
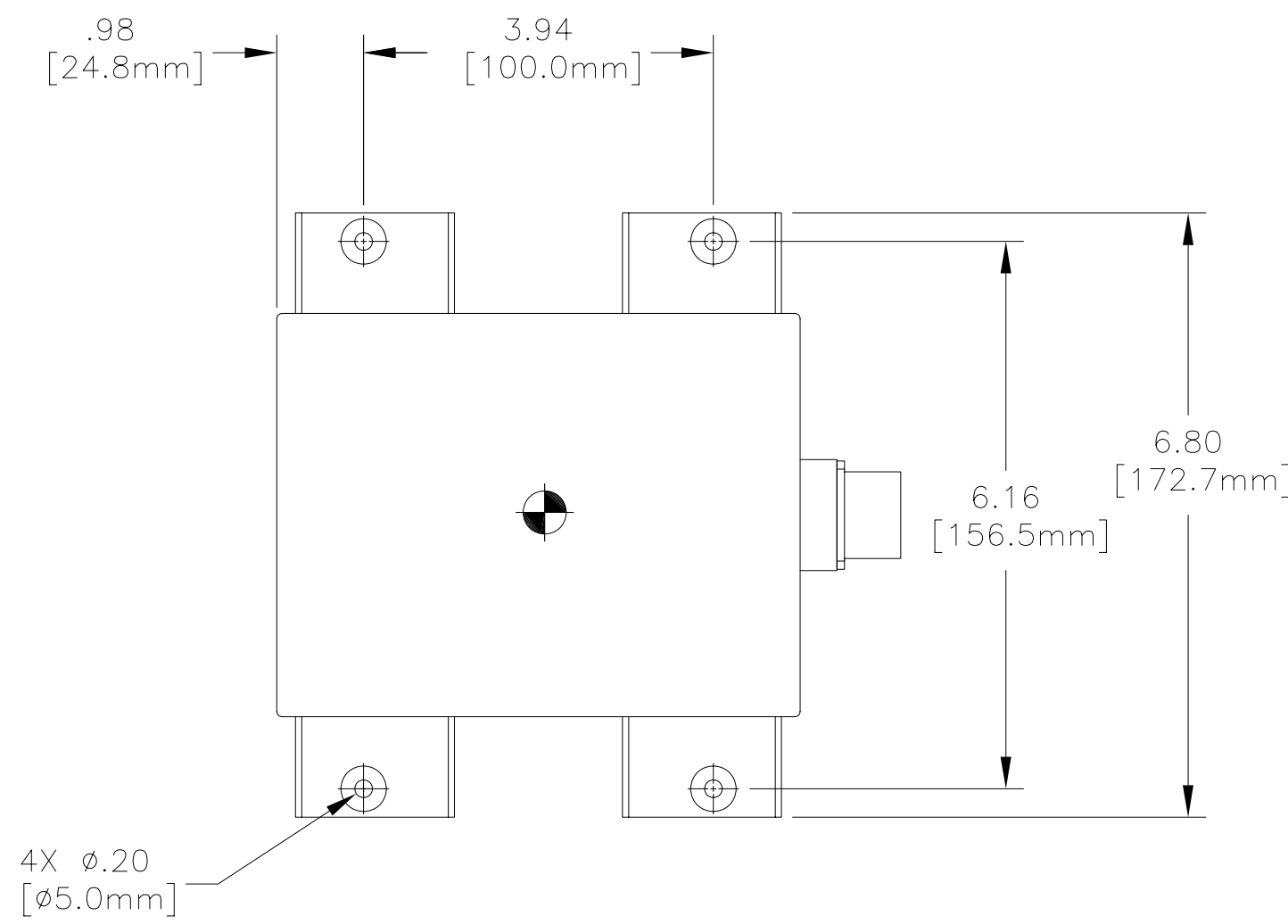


RECEPTACLE SCHEMATIC DIAGRAM  
RG-121-1 & -3

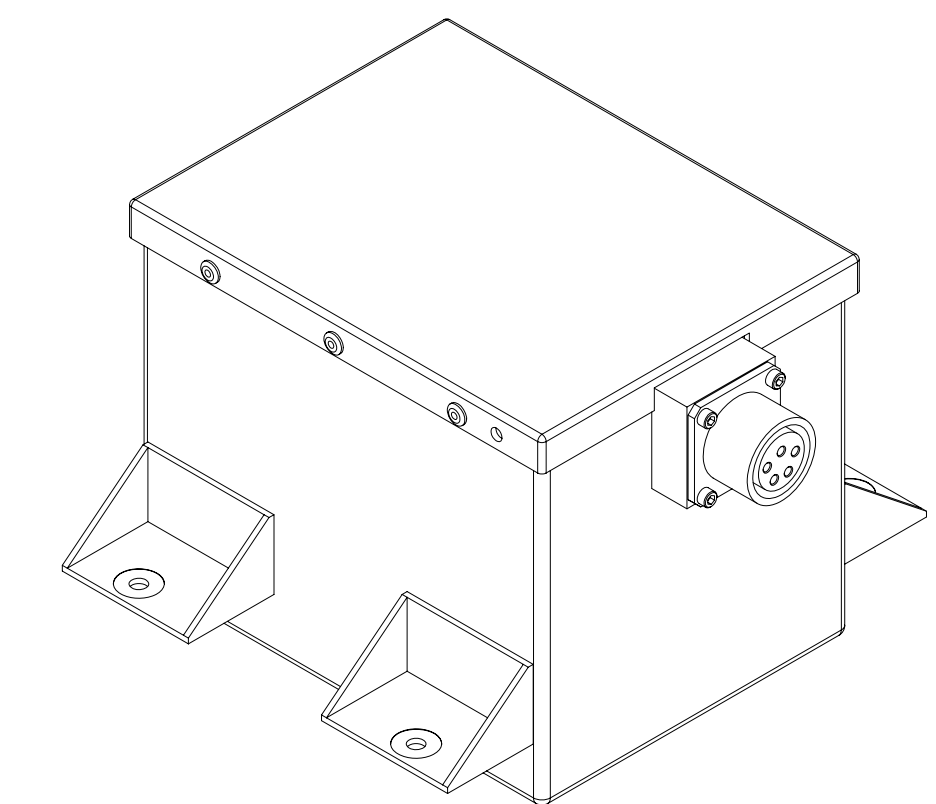


\* PINS B AND C OF MATING CONNECTOR IN AIRCRAFT MAY BE JUMPERED

RECEPTACLE SCHEMATIC DIAGRAM  
RG-121-2 & -4



RG-121-1 & -2 REFERENCE VIEW



RG-121-3 & -4 REFERENCE VIEW

PART NUMBER	RG-121-1			RG-121-2		
MAXIMUM WEIGHT	6.4 LBS [2.9 KG]			6.4 LBS [2.9 KG]		
RATED CAPACITY, C <sub>1</sub>	2.0 AH			2.0 AH		
POWER RATING	NOT RATED			NOT RATED		
TEST TEMPERATURE	@23°C (74°F)	@-18°C (0°F)	@-30°C (-22°F)	@23°C (74°F)	@-18°C (0°F)	@-30°C (-22°F)
CAPACITY, 2.0 A	2.0 AH	1.3 AH	0.5 AH	2.0 AH	1.5 AH	1.0 AH
RAPID DISCHARGE, 20 A	1.1 AH	NOT RATED	0.38 AH	1.1 AH	NOT RATED	0.95 AH
INTERNAL DC HEATER	NONE			2A MAX @ 28.25 VDC POWER APPLIED FOR 1 HOUR PRIOR TO TEST		

BATTERY	DIM "A"	DIM "B"	DIM "C"	DIM "D"
RG-121-1 & -2	3.30 [83.8mm]	2.46 [62.4mm]	1.29 [32.8mm]	2.97 [75.4mm]
RG-121-3 & -4	4.68 [118.7mm]	3.83 [97.3mm]	1.92 [48.8mm]	2.93 [74.4mm]

PART NUMBER	RG-121-3			RG-121-4		
MAXIMUM WEIGHT	10.0 LBS [4.6 KG]			10.0 LBS [4.6 KG]		
RATED CAPACITY, C <sub>1</sub>	3.3 AH			3.3 AH		
POWER RATING	NOT RATED			NOT RATED		
TEST TEMPERATURE	@23°C (74°F)	@-18°C (0°F)	@-30°C (-22°F)	@23°C (74°F)	@-18°C (0°F)	@-30°C (-22°F)
CAPACITY, 3.3 A	3.3 AH	2.1 AH	1.5 AH	3.3 AH	2.6 AH	2.1 AH
RAPID DISCHARGE, 33 A	1.9 AH	NOT RATED	0.7 AH	1.9 AH	NOT RATED	1.47 AH
INTERNAL DC HEATER	NONE			2A MAX @ 28.25 VDC POWER APPLIED FOR 1 HOUR PRIOR TO TEST		

ENVELOPE DRAWING

QTY REQD	CAGE CODE	PART OR IDENTIFYING NO.	NONNOMENCLATURE OR DESCRIPTION	MATERIAL SPECIFICATION	ITEM NO.
PARTS LIST					
UNLESS OTHERWISE SPECIFIED DIMENSIONS ARE IN INCHES TOLERANCES ARE:		CONTRACT NO. NA		CONCORDE BATTERY CORPORATION 2009 SAN BERNARDINO RD, W. COVINA, CA 91790	
FRACTIONS .XX ± .03	DECIMALS .XXX ± .030	ANGLES	APPROVALS	DATE	TITLE BATTERY, VRSLA, 24 VOLT, RG-121 SERIES
TREATMENT NONE		DRAWN ELH		2/2/01	SIZE D
FINISH NONE		CHECKED S.VALDEZ		2/2/01	CAGE CODE 63017
SIMILAR TO NA		APPROVED JBT		2/15/01	DWG NO. RG-121
ACT WT NA		ISSUED JJ		7/16/10	REV C
CALC WT NA		SCALE NONE		SHEET 1 OF 1	