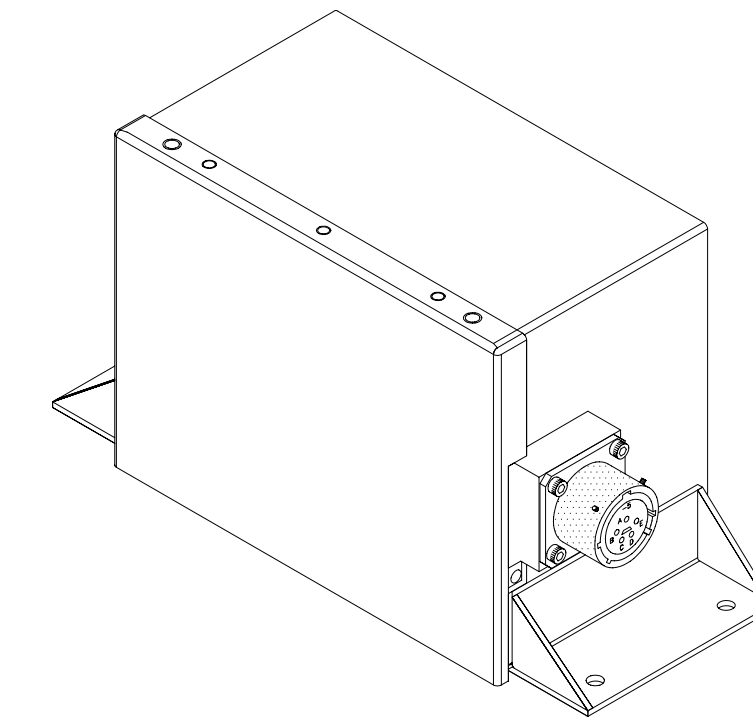
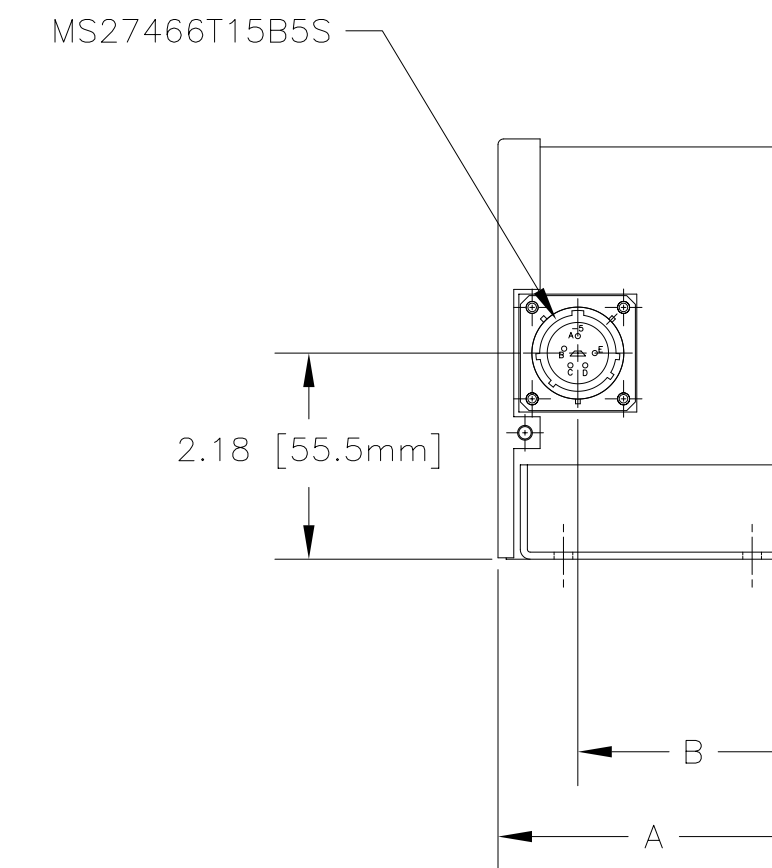
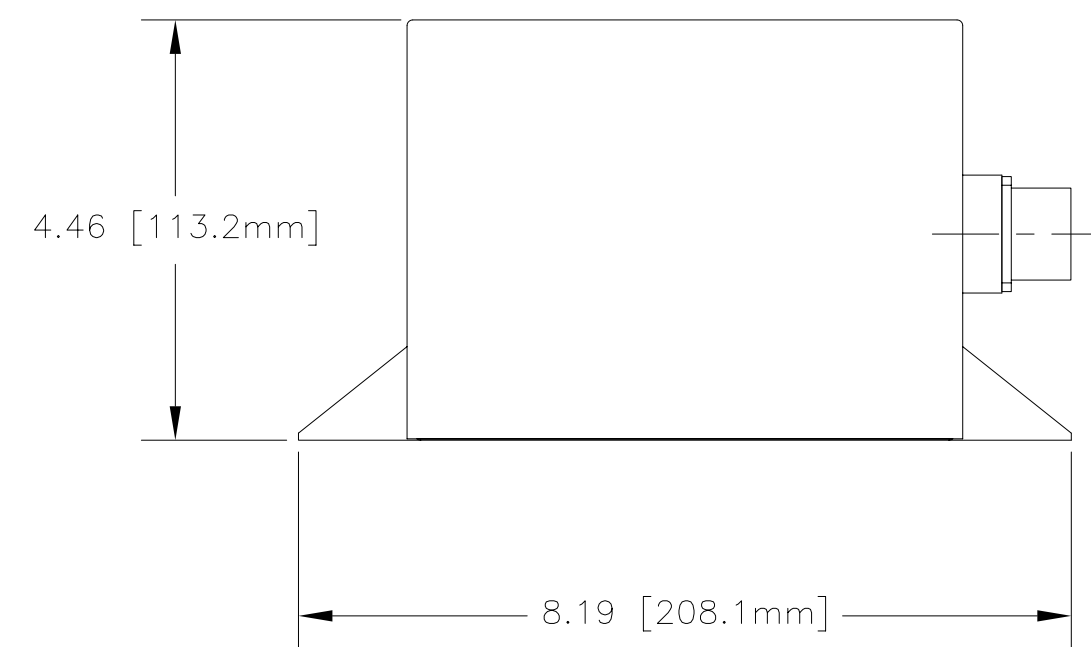
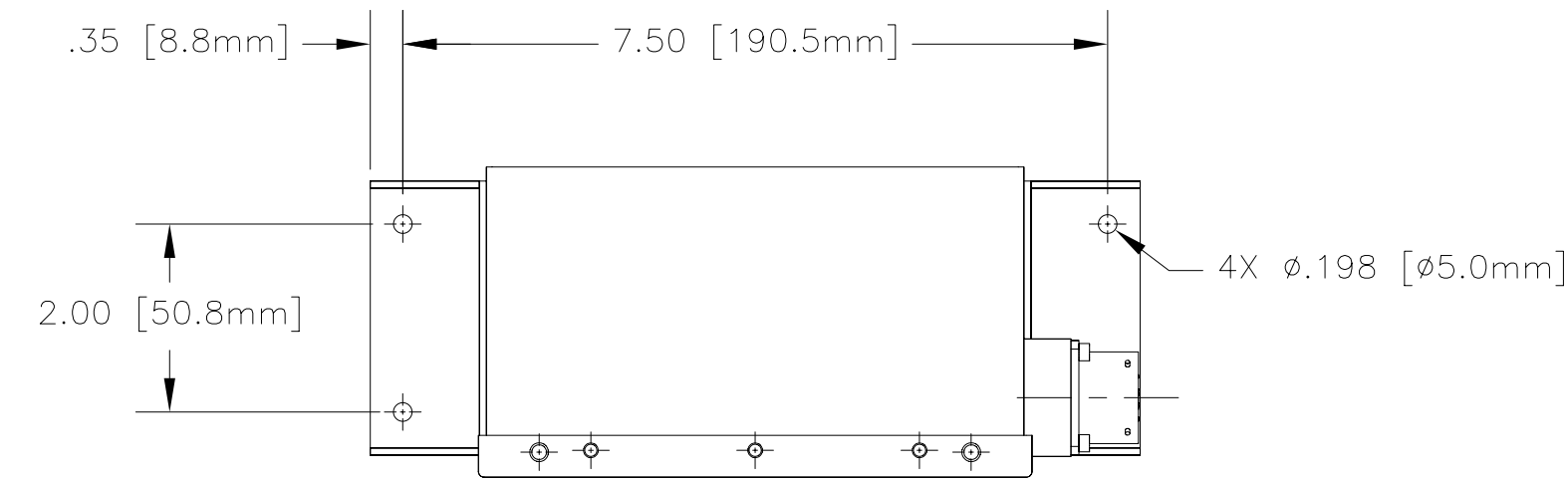
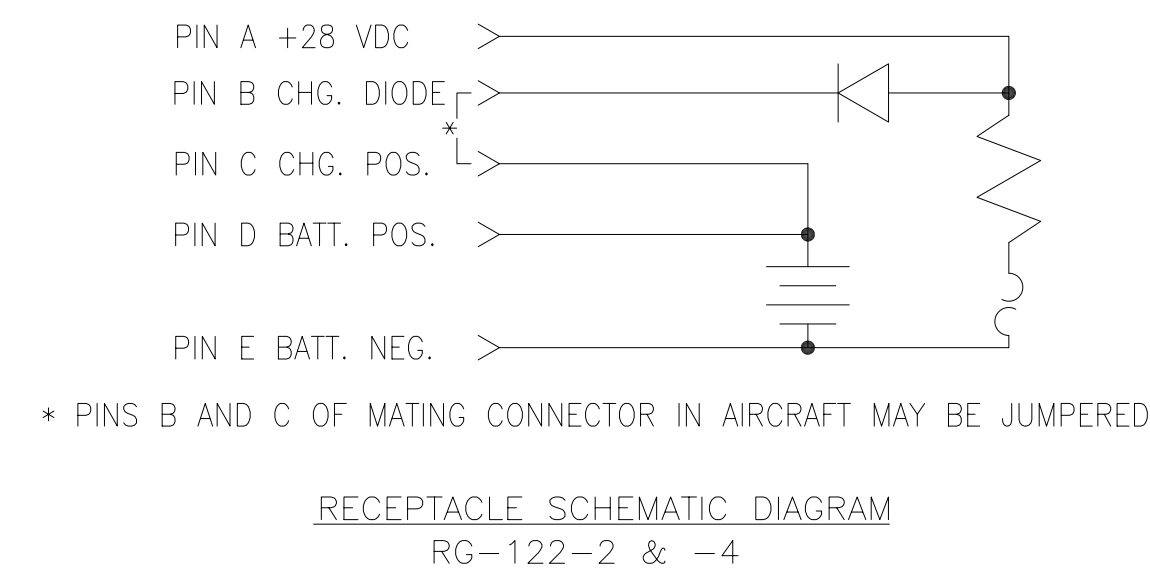
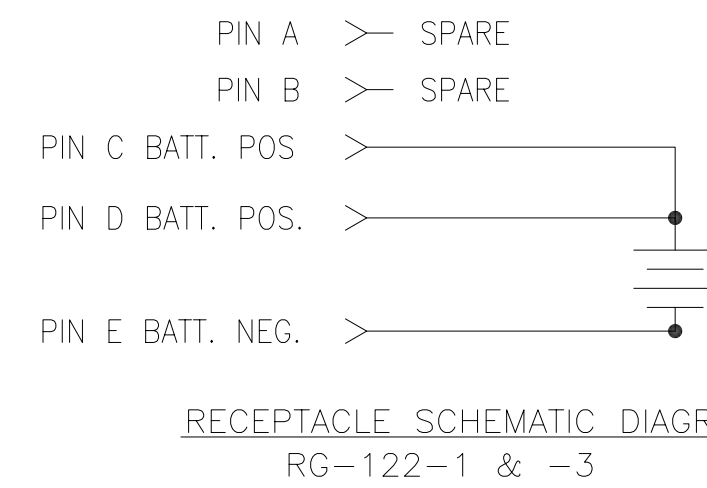


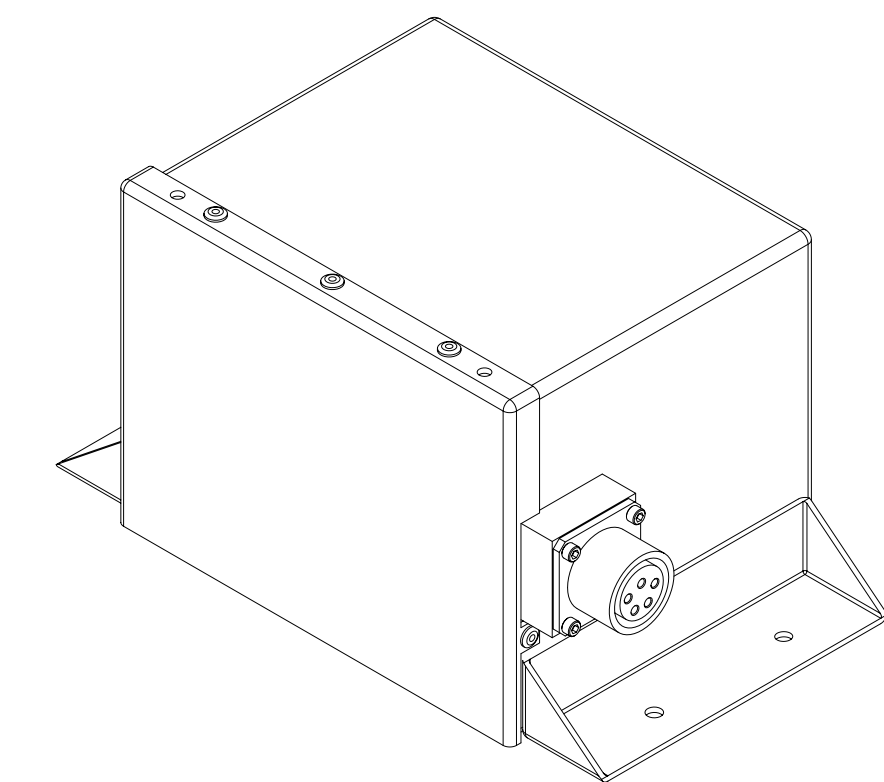
NOTES: UNLESS OTHERWISE SPECIFIED

- BATTERY CONFORMS TO THE DESIGN REQUIREMENTS OF 14 CFR PARTS 23.1353, 25.1353(c), 27.1353, 29.1353(c).
- INSPECT PER FAR 21.303(h) QUALITY SYSTEM.
- ABBREVIATION USED IN TITLE IS: VALVE REGULATED SEALED LEAD ACID (VRSLA).
- SEE DRAWING NO. CB-00234 AND PROCEDURE P-1000 FOR ASSEMBLY AND TEST INSTRUCTION. PROCEDURES AND ASSEMBLY DRAWINGS ARE FOR INTERNAL USE ONLY.
- BATTERIES ARE RATED IAW INTERNATIONAL ELECTROTECHNICAL COMMISSION STANDARD 60952-1, UNLESS OTHERWISE NOTED.
- DIMENSIONS ARE IN INCH [MILLIMETER].

REVISIONS			
REV	DESCRIPTION	DATE	APPROVED
A	ADDED 122-3 & -4	7/18/01	JBT
B	UPDATED RATINGS	2/26/07	JBT



RG-122-1 & -2 REFERENCE VIEW



RG-122-3 & -4 REFERENCE VIEW

PART NUMBER	RG-122-1			RG-122-2		
MAXIMUM WEIGHT	6.4 LBS [2.9 KG]			6.4 LBS [2.9 KG]		
RATED CAPACITY, C <sub>1</sub>	2.0 AH			2.0 AH		
POWER RATING	NOT RATED			NOT RATED		
TEST TEMPERATURE	@23°C (74°F)	@-18°C (0°F)	@-30°C (-22°F)	@23°C (74°F)	@-18°C (0°F)	@-30°C (-22°F)
CAPACITY, 2.0 A	2.0 AH	1.3 AH	0.5 AH	2.0 AH	1.5 AH	1.0 AH
RAPID DISCHARGE, 12 A	1.1 AH	NOT RATED	0.38 AH	1.1 AH	NOT RATED	0.95 AH
INTERNAL DC HEATER	NONE			2A MAX @ 28.25 VDC POWER APPLIED FOR 1 HOUR PRIOR TO TEST		

PART NUMBER	RG-122-3			RG-122-4		
MAXIMUM WEIGHT	10.0 LBS [4.6 KG]			10.0 LBS [4.6 KG]		
RATED CAPACITY, C <sub>1</sub>	3.3 AH			3.3 AH		
POWER RATING	NOT RATED			NOT RATED		
TEST TEMPERATURE	@23°C (74°F)	@-18°C (0°F)	@-30°C (-22°F)	@23°C (74°F)	@-18°C (0°F)	@-30°C (-22°F)
CAPACITY, 3.25 A	3.3 AH	2.1 AH	1.5 AH	3.3 AH	2.6 AH	2.1 AH
RAPID DISCHARGE, 19.5 A	1.9 AH	NOT RATED	0.7 AH	1.9 AH	NOT RATED	1.47 AH
INTERNAL DC HEATER	NONE			2A MAX @ 28.25 VDC POWER APPLIED FOR 1 HOUR PRIOR TO TEST		

BATTERY	DIM "A"	DIM "B"
RG-122-1 & -2	3.30 [83.8mm]	2.46 [62.4mm]
RG-122-3 & -4	4.68 [118.7mm]	3.83 [97.3mm]

ENVELOPE DRAWING

QTY REQD	CAGE CODE	PART OR IDENTIFYING NO.	NOMENCLATURE OR DESCRIPTION	MATERIAL SPECIFICATION	ITEM NO.
PARTS LIST					
UNLESS OTHERWISE SPECIFIED DIMENSIONS ARE IN INCHES TOLERANCES ARE:		CONTRACT NO. NA		CONCORDE BATTERY CORPORATION 2009 SAN BERNARDINO RD, W. COVINA, CA 91790	
FRACTIONS .XX ± .03	DECIMALS .XXX ± .030	ANGLES	APPROVALS	DATE	TITLE
		DRAWN ELH		2/2/01	BATTERY, VRSLA, 24 VOLT, RG-122 SERIES
TREATMENT NONE		CHECKED S. VALDEZ		2/2/01	SIZE
FINISH NONE		APPROVED JBT		2/15/01	CAGE CODE
SIMILAR TO NA		ISSUED NS		2/26/07	DWG NO. RG-122
				SCALE NONE	REV B
				SHEET 1 OF 1	

ENGINEERING COPY 26FEB07