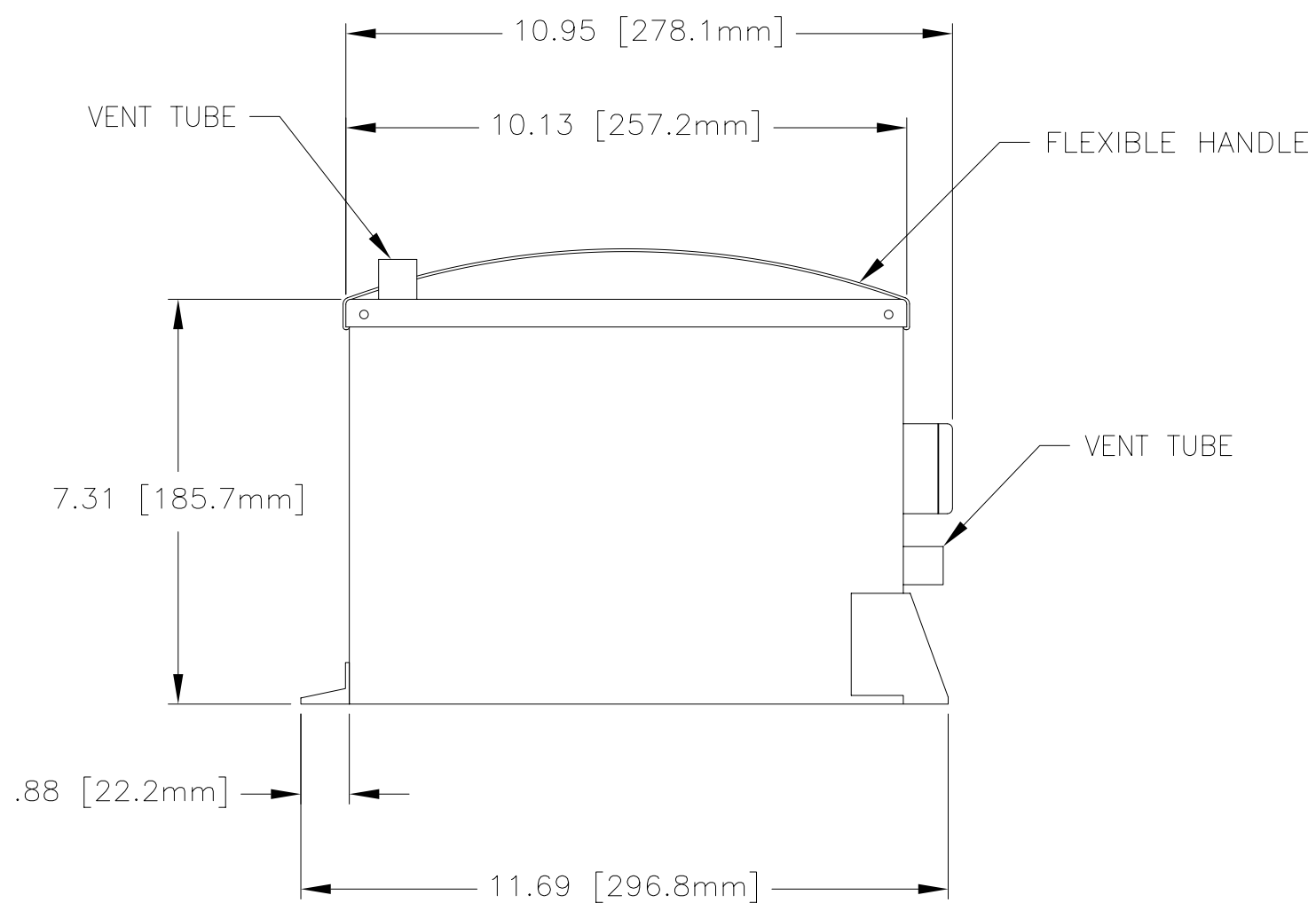
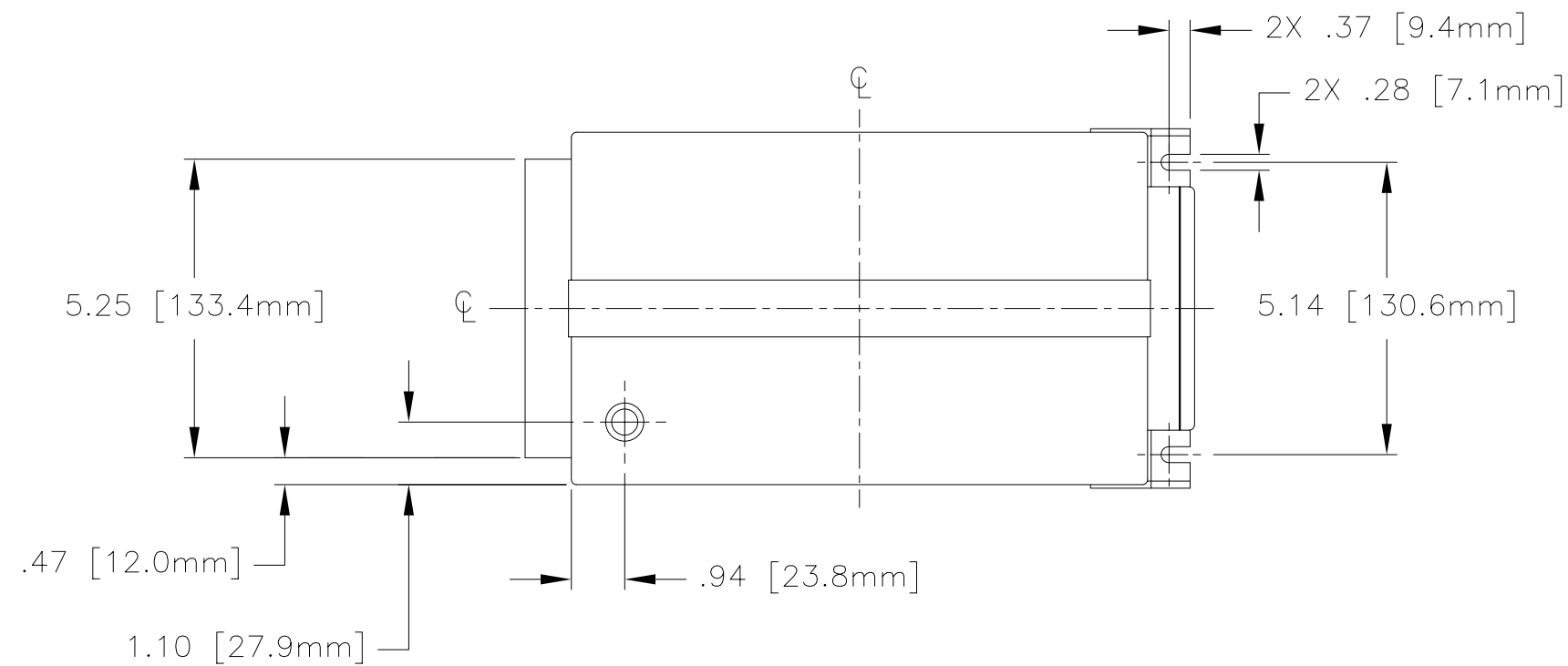


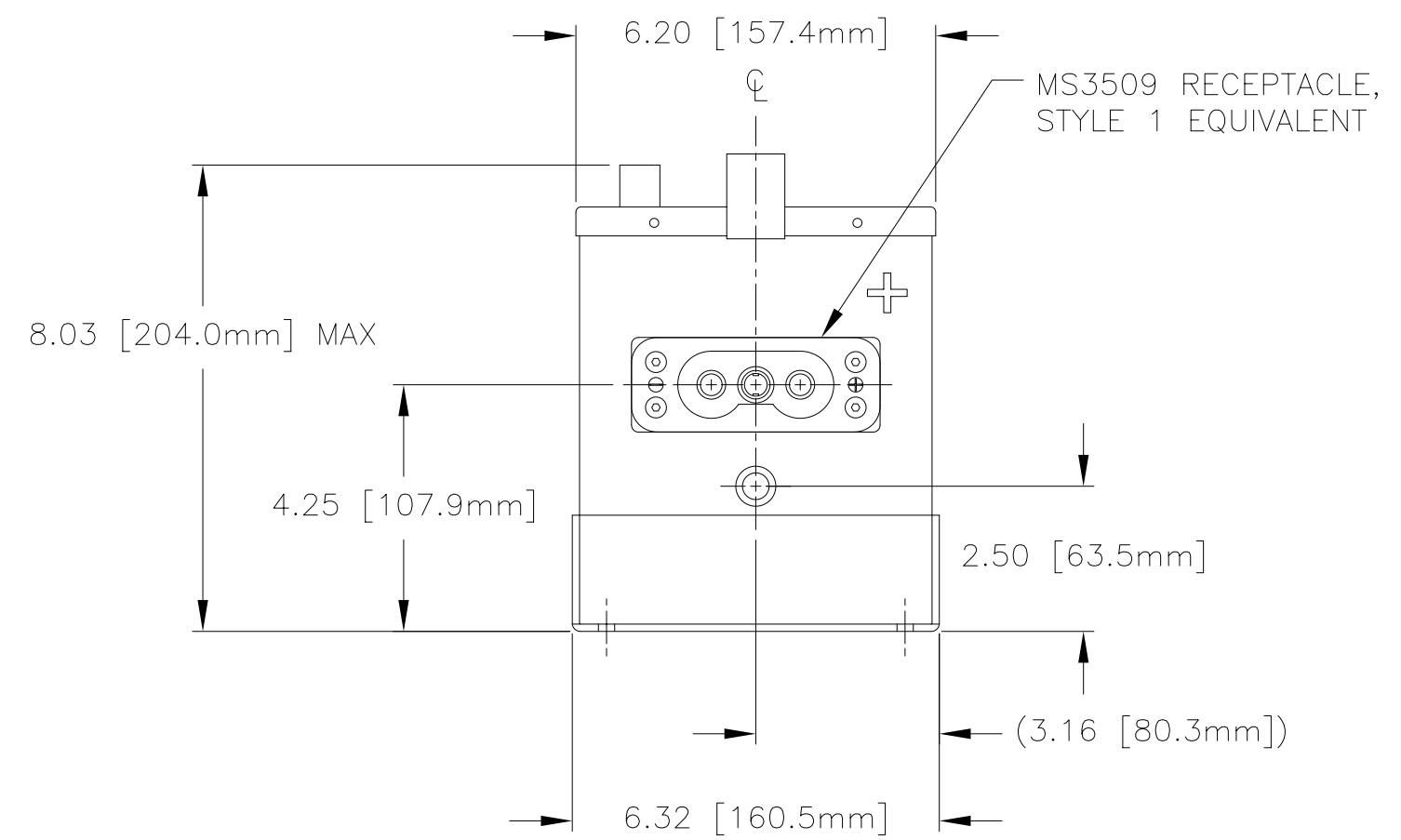
NOTES: UNLESS OTHERWISE SPECIFIED

1. MANUFACTURED AND INSPECTED IAW AS9100 QUALITY SYSTEM REQUIREMENTS.
2. ABBREVIATION USED IN TITLE IS: VALVE REGULATED SEALED LEAD ACID (VRSLA).
3. SEE DRAWING NO. CB-00227 AND PROCEDURE P-1000 FOR ASSEMBLY AND TEST INSTRUCTION. PROCEDURES AND ASSEMBLY DRAWINGS ARE FOR INTERNAL USE ONLY.
4. BATTERIES ARE RATED IAW INTERNATIONAL ELECTROTECHNICAL COMMISSION STANDARD 60952-1 AND RTCA DO-293, UNLESS OTHERWISE NOTED.
5. BATTERY CONFORMS TO THE DESIGN REQUIREMENTS OF 14 CFR PARTS 23.1353, 25.1353(c), 27.1353, 29.1353(c).

REVISIONS			
REV	DESCRIPTION	DATE	APPROVED
G	SEE DCN RG222G	1/22/09	JBT



PART NUMBER	RG-222
MAXIMUM WEIGHT	43 LBS [19.5 KG]
RATED CAPACITY, C ₁	17 AH
POWER RATING AT 23°C	I _{pp} 900 A, I _{pr} 625 A
POWER RATING AT -18°C	I _{pp} 600 A, I _{pr} 425 A
POWER RATING AT -30°C	I _{pp} 450 A, I _{pr} 300 A



ENVELOPE DRAWING

QTY REQD	CAGE CODE	PART OR IDENTIFYING NO.	NOMENCLATURE OR DESCRIPTION	MATERIAL SPECIFICATION	ITEM NO.
PARTS LIST					
UNLESS OTHERWISE SPECIFIED DIMENSIONS ARE IN INCHES TOLERANCES ARE: FRACTIONS DECIMALS ANGLES ±1/32 .XX ±.06 ±1° .XXX ±.060			CONCORDE BATTERY CORPORATION 2009 SAN BERNARDINO RD, W. COVINA, CA 91790		
CONTRACT NO.			TITLE		
APPROVALS			DATE		
DRAWN MENDOZA			1/26/95		
CHECKED FMIII			3/20/96		
TREATMENT NONE			APPROVED JBT		
FINISH NONE			3/20/96		
SIMILAR TO			ISSUED NS		
ACT WT			CALC WT		
1/23/09			SCALE NONE		
CAGE CODE 63017			DWG NO. RG-222		
SIZE C			REV G		
SHEET 1 OF 1					