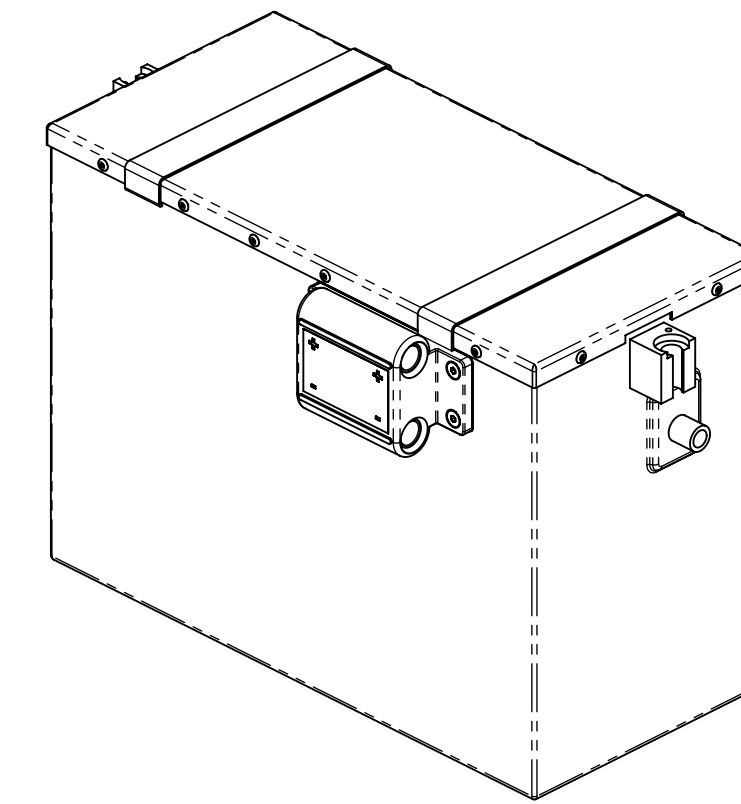
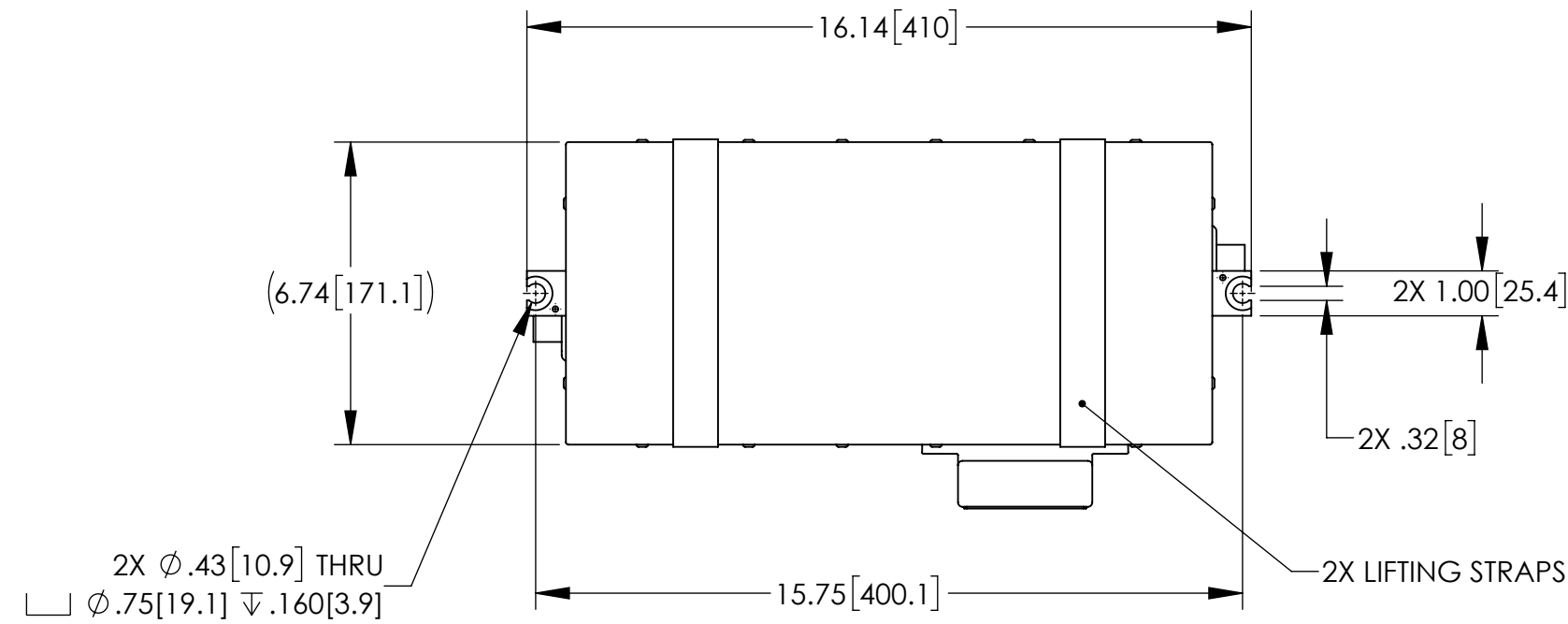


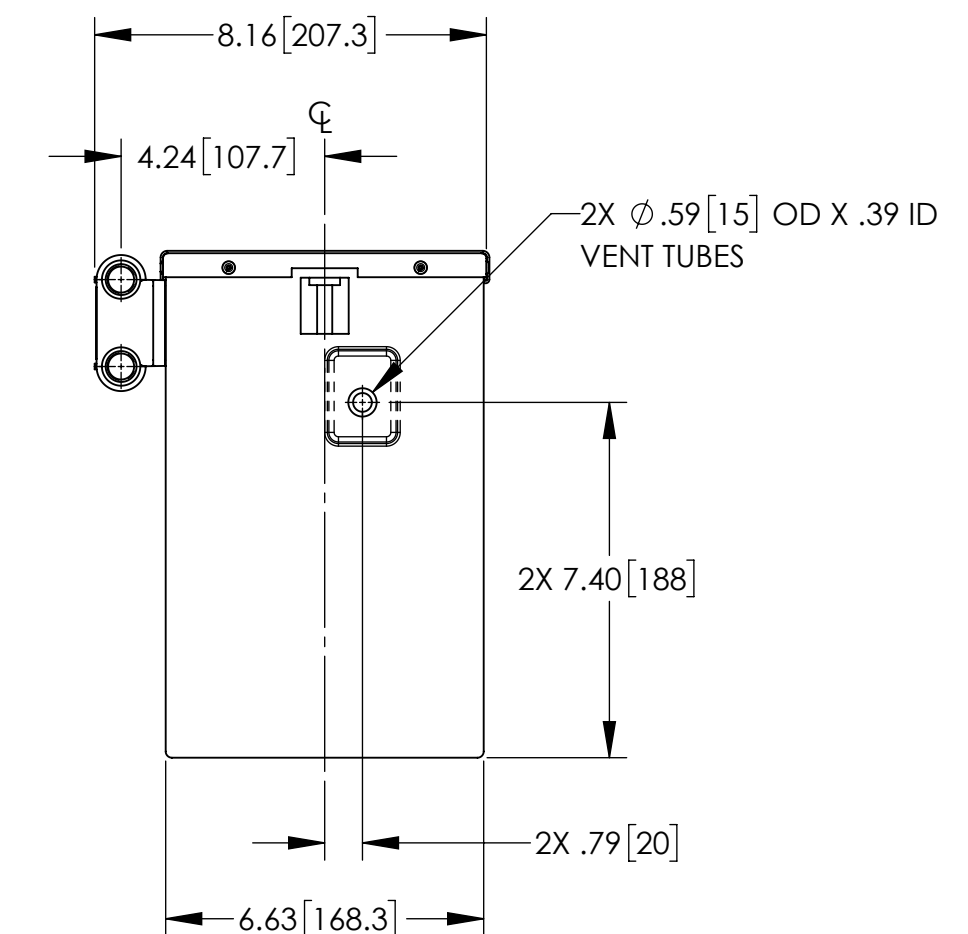
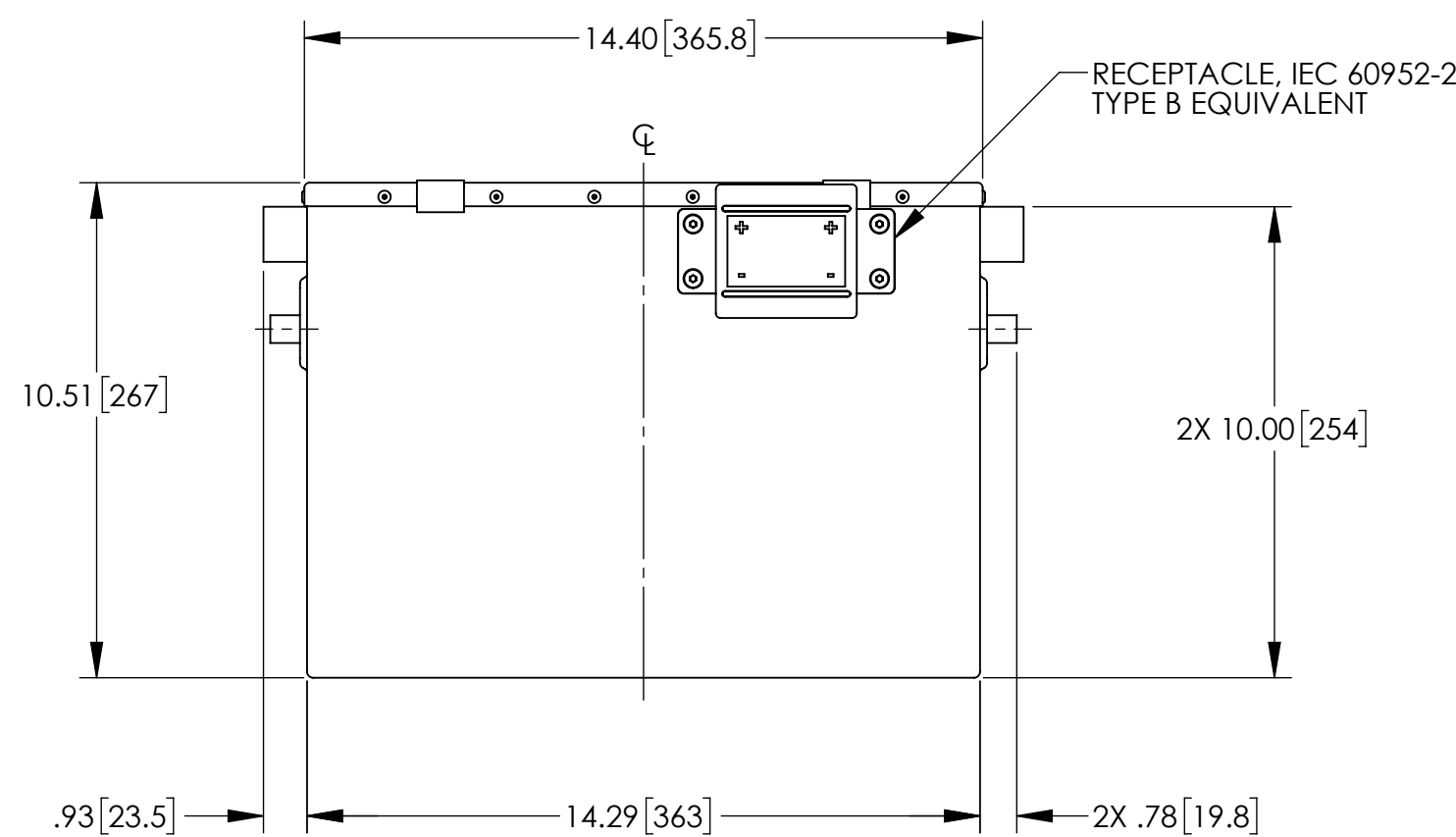
NOTES: UNLESS OTHERWISE SPECIFIED

1. MANUFACTURED AND INSPECTED IAW AS9100 QUALITY SYSTEM REQUIREMENTS.
2. ABBREVIATION USED IN TITLE IS: VALVE REGULATED SEALED LEAD ACID (VRSLA).
3. SEE DRAWING NO. CB-00247 AND PROCEDURE P-1000 FOR ASSEMBLY AND TEST INSTRUCTION. PROCEDURES AND ASSEMBLY DRAWINGS ARE FOR INTERNAL USE ONLY.
4. BATTERIES ARE RATED IAW INTERNATIONAL ELECTROTECHNICAL COMMISSION STANDARD 60952-1 AND RTCA STANDARD DO-293A, UNLESS OTHERWISE NOTED.
5. DIMENSIONS ARE INCH [MILLIMETER].

REVISIONS			
REV	DESCRIPTION	DATE	APPROVED
A	REVISED C1 RATING TO 43 AH	2/11/17	PH



ISOMETRIC VIEW



ENVELOPE DRAWING

PART NUMBER	RG-365
MAXIMUM WEIGHT	81.0 LBS [36.7 KG]
RATED CAPACITY, C <sub>1</sub>	43 AH
POWER RATING AT 23 °C	lpp 1075 A, lpr 875 A
POWER RATING AT -18 °C	lpp 800 A, lpr 675 A
POWER RATING AT -30 °C	lpp 650 A, lpr 550 A

UNLESS OTHERWISE SPECIFIED DIMENSIONS ARE IN INCHES TOLERANCES ARE:			CONTRACT NO.		CONCORDE BATTERY CORPORATION 2009 SAN BERNARDINO RD, W. COVINA, CA 91790		
FRACTIONS	DECIMALS	ANGLES	APPROVALS	DATE	TITLE		
±1/32	.XX ± 06 .XXX ± 030	±1°	DRAWN A. MISTRETTA	12/1/14	BATTERY, VRSLA, 24 VOLT		
TREATMENT	NONE	CHECKED NS	9/9/15	SIZE	CAGE CODE	DWG NO.	REV
FINISH	NONE	APPROVED JBT	9/11/15	C	63017	RG-365	A
SIMILAR TO	CALC WT	ISSUED JG	2/13/17	SCALE	1:4	SHEET	1 OF 1