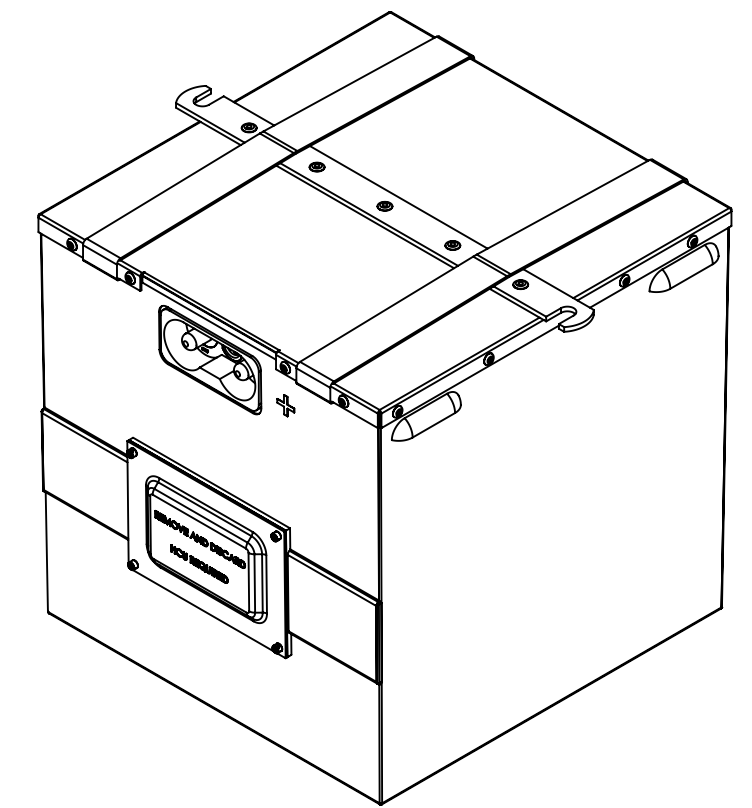
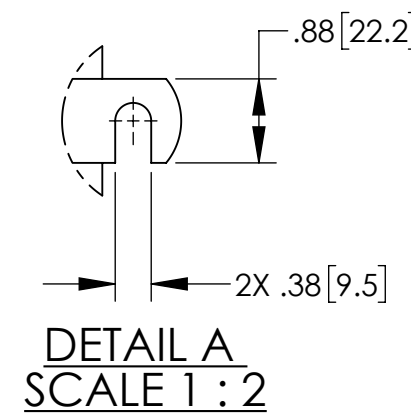
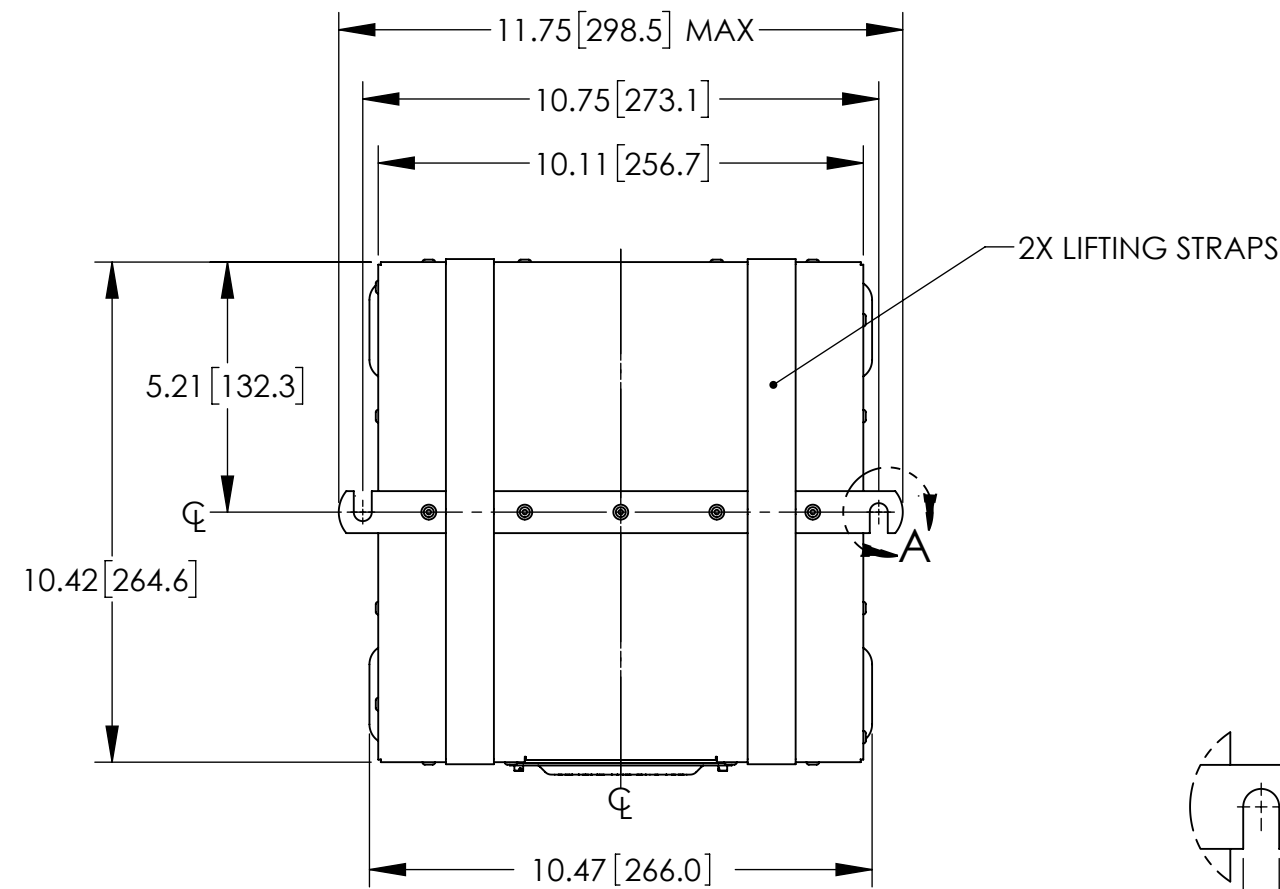


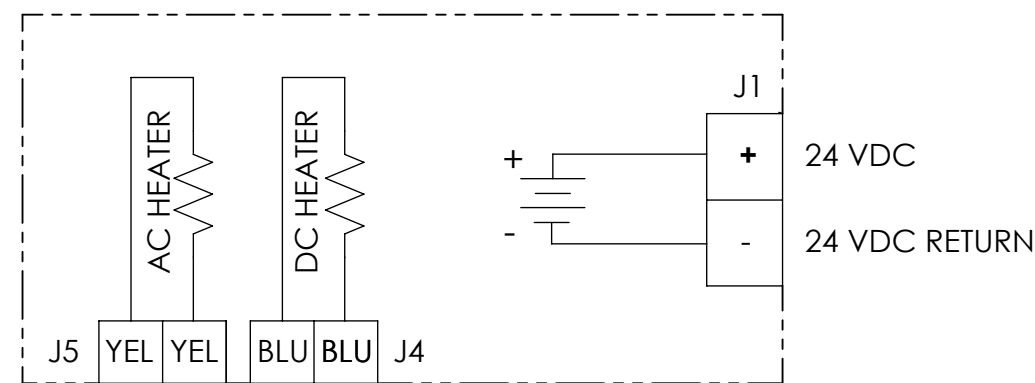
NOTES: UNLESS OTHERWISE SPECIFIED

1. MANUFACTURED AND INSPECTED IAW AS9100 QUALITY SYSTEM REQUIREMENTS.
2. ABBREVIATION USED IN TITLE IS: VALVE REGULATED SEALED LEAD ACID (VRSLA).
3. SEE DRAWING NO. CB-00414 AND PROCEDURE P-1000 FOR ASSEMBLY AND TEST INSTRUCTION. PROCEDURES AND ASSEMBLY DRAWINGS ARE FOR INTERNAL USE ONLY.
4. BATTERIES ARE RATED IAW INTERNATIONAL ELECTROTECHNICAL COMMISSION STANDARD 60952-1 AND RTCA STANDARD DO-293A, UNLESS OTHERWISE NOTED.
5. DIMENSIONS ARE INCH [MILLIMETER].
6. "KH" SUFFIX DENOTES A "FIRE RESISTANT" EXTERNAL CONTAINER CONSTRUCTED OF 5052 ALUMINUM ALLOY.  
"KSH" SUFFIX DENOTES A "FIRE PROOF" EXTERNAL CONTAINER CONSTRUCTED OF STAINLESS STEEL.
7. HEATER CONTROL UNIT (HCU) IS REQUIRED TO CONSTITUTE A COMPLETE BATTERY ASSEMBLY. REFER TO CONCORDE'S WEBSITE FOR AVAILABLE HCU'S. ONLY HCU'S SUPPLIED BY CONCORDE ARE PERMITTED.
8. CAUTION: DO NOT POWER AC AND DC HEATERS SIMULTANEOUSLY.
9. REFER TO DRAWING RG-380E/44K(S)H[ ] FOR ENVELOPE DRAWING WITH HCU INSTALLED.

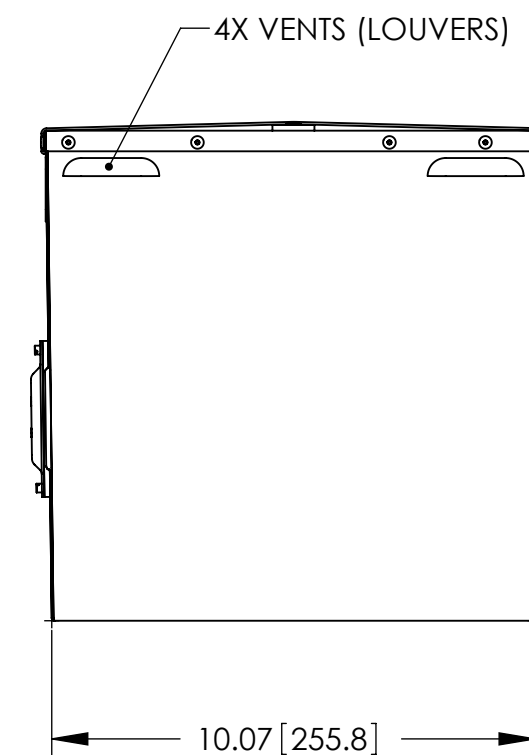
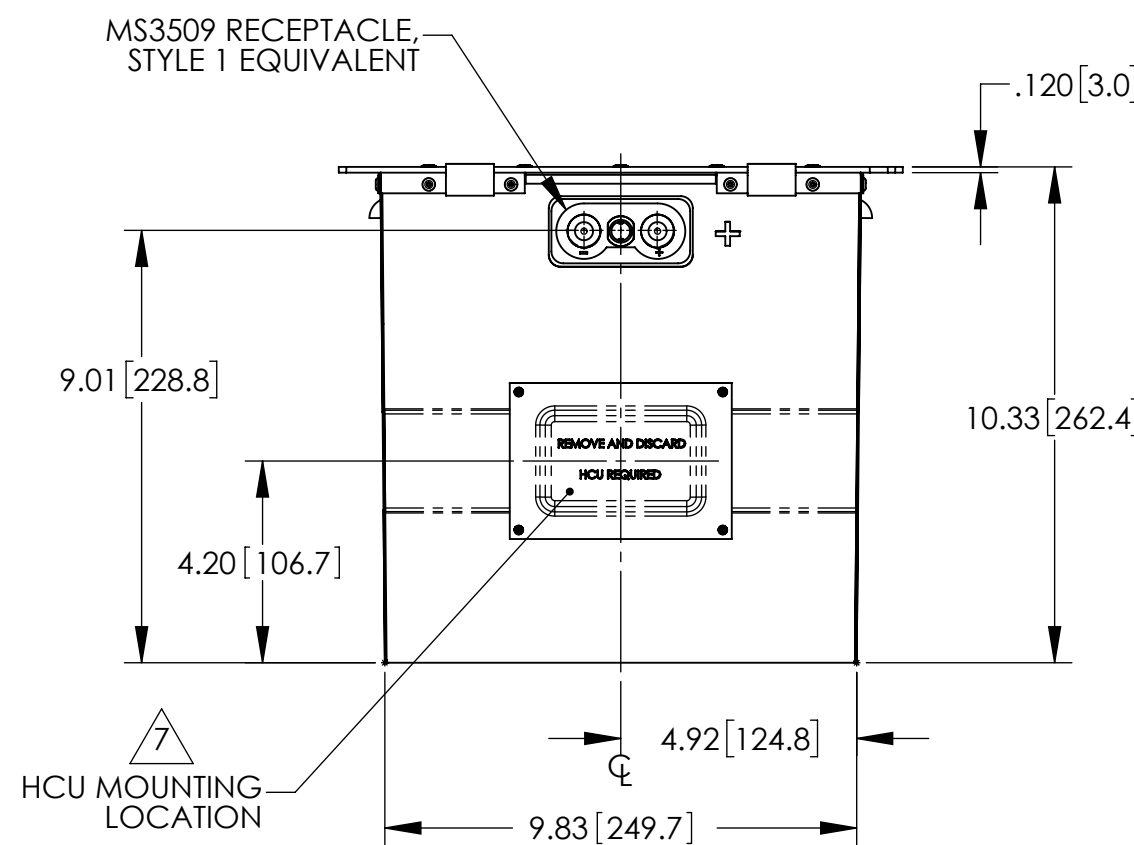
REVISIONS			
REV	DESCRIPTION	DATE	APPROVED
A	ADDED RG-380E/44KSH, REVISED HCU COVER PLATE, RATING BLOCK, SCHEMATIC, NOTE 6 & TITLE, ADDED NOTE 7, 8 & 9	6/14/11	JBT
B	UPDATED VIEWS OF CONTAINER & COVER, DO-293A WAS DO-293, REVISED NOTE 9	6/16/16	PH



ISOMETRIC VIEW



BATTERY SCHEMATIC



ENVELOPE DRAWING

PART NUMBER	RG-380E/44KH	RG-380E/44KSH
MAXIMUM WEIGHT	89 LBS [40.4 KG]	91 LBS [41.3 KG]
RATED CAPACITY, C <sub>1</sub>	42 AH	
POWER RATING AT 23°C	I <sub>pp</sub> 1350 A, I <sub>pr</sub> 1000 A	
POWER RATING AT -18°C	I <sub>pp</sub> 875 A, I <sub>pr</sub> 750 A	
POWER RATING AT -30°C	I <sub>pp</sub> 750 A, I <sub>pr</sub> 600 A	
INTERNAL DC HEATER	10.62A @ 28.25 VDC	
INTERNAL AC HEATER	2.61A @ 115 VAC	

UNLESS OTHERWISE SPECIFIED DIMENSIONS ARE IN INCHES TOLERANCES ARE:			CONTRACT NO.		CONCORDE BATTERY CORPORATION 2009 SAN BERNARDINO RD, W. COVINA, CA 91790		
FRACTIONS	DECIMALS	ANGLES	APPROVALS	DATE	TITLE		
±1/32	.XX ±.06 .XXX ±.030	±1°			BATTERY, VRSLA, 24 VOLT, RG-380/44K(S)H		
TREATMENT	NONE	CHECKED	AMIII	10/18/10	SIZE	CAGE CODE	DWG NO.
FINISH	NONE	APPROVED	JBT	10/21/10	C	63017	RG-380E/44KH
SIMILAR TO	CALC WT	ISSUED	JG	6/17/16	SCALE	1:4	REV B
					SHEET 1 OF 1		