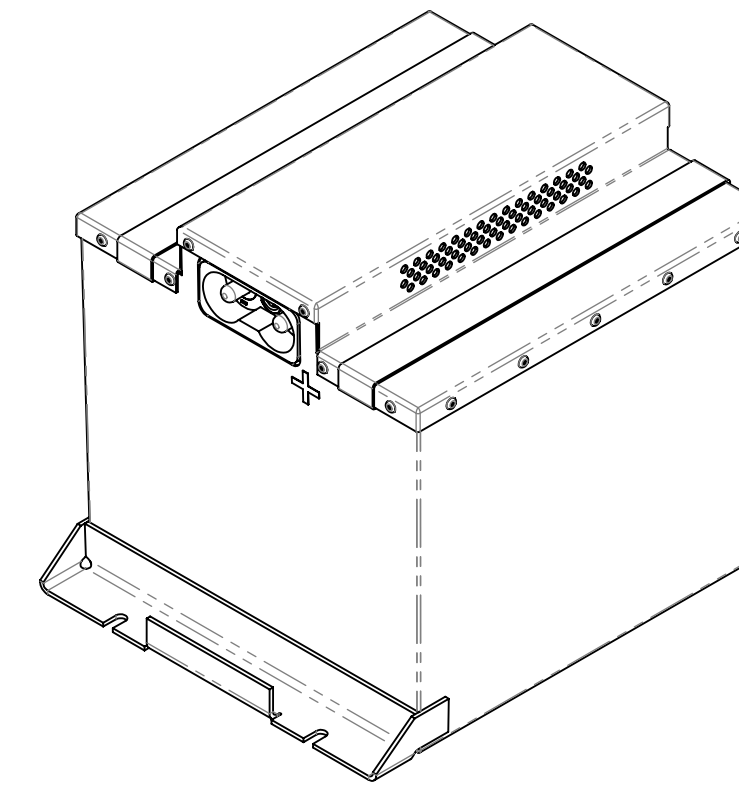
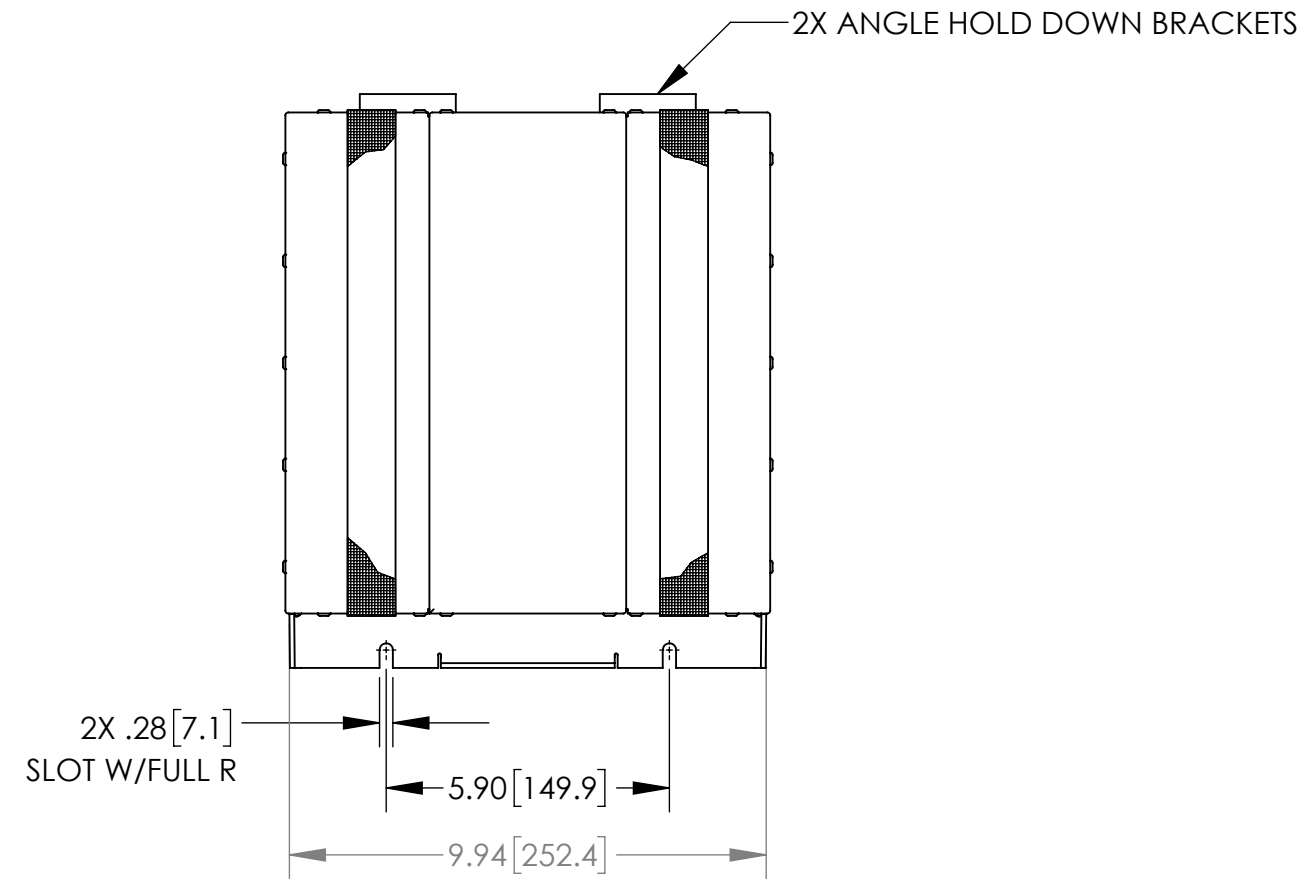


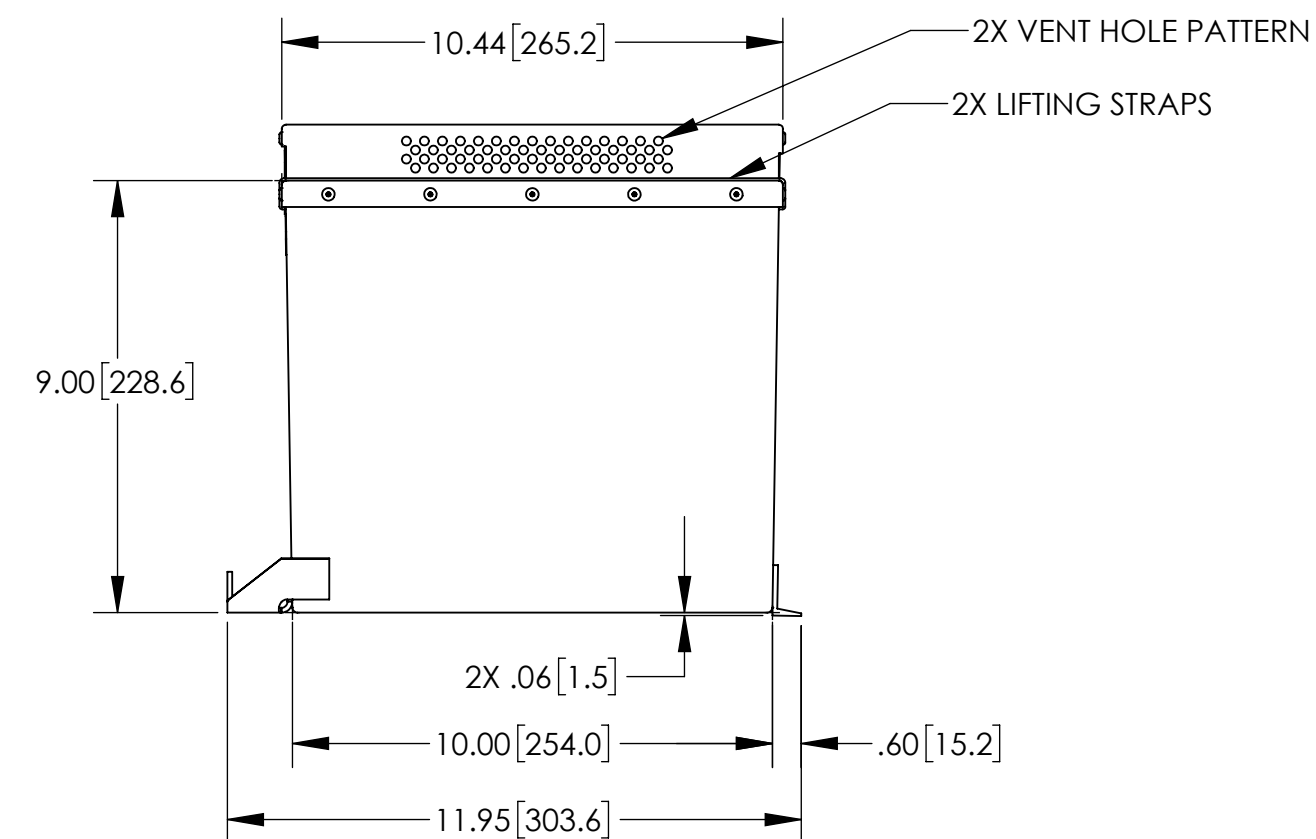
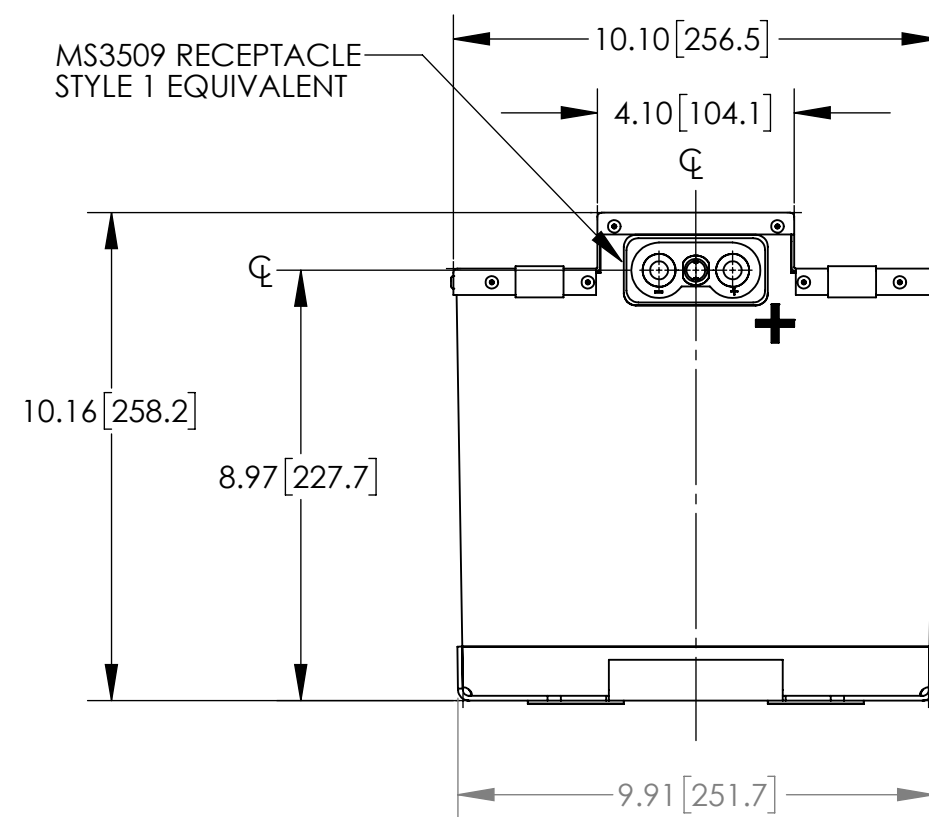
NOTES: UNLESS OTHERWISE SPECIFIED

1. MANUFACTURED AND INSPECTED IAW AS9100 QUALITY SYSTEM REQUIREMENTS.
2. ABBREVIATION USED IN TITLE IS: VALVE REGULATED SEALED LEAD ACID (VRSLA).
3. SEE DRAWING NO. CB-00276 AND PROCEDURE P-1000 FOR ASSEMBLY AND TEST INSTRUCTION. PROCEDURES AND ASSEMBLY DRAWINGS ARE FOR INTERNAL USE ONLY.
4. BATTERIES ARE RATED IAW INTERNATIONAL ELECTROTECHNICAL COMMISSION STANDARD 60952-1 AND RTCA STANDARD DO-293A, UNLESS OTHERWISE NOTED.
5. DIMENSIONS ARE INCH [MILLIMETER].

REVISIONS			
REV	DESCRIPTION	DATE	APPROVED



ISOMETRIC VIEW



PART NUMBER	RG-41/53
MAXIMUM WEIGHT	96.0 LBS [43.6 KG]
RATED CAPACITY, C ₁	53 AH
POWER RATING AT 23 °C	lpp 1650 A, lpr 1200 A
POWER RATING AT -18 °C	lpp 1325 A, lpr 1000 A
POWER RATING AT -30 °C	lpp 1125 A, lpr 800 A

ENVELOPE DRAWING

UNLESS OTHERWISE SPECIFIED DIMENSIONS ARE IN INCHES TOLERANCES ARE:			CONTRACT NO.		CONCORDE BATTERY CORPORATION 2009 SAN BERNARDINO RD, W. COVINA, CA 91790		
FRACTIONS	DECIMALS	ANGLES	APPROVALS	DATE	TITLE		
±1/32	.XX ± .06 .XXX ± .030	±1°	DRAWN D. AYALA	1/17/17	BATTERY, VRSLA, 24 VOLT		
TREATMENT	NONE		CHECKED NS	1/31/17	SIZE	CAGE CODE	DWG NO.
FINISH	NONE		APPROVED PH	3/03/17	C	63017	RG-41/53
SIMILAR TO	CALC WT		ISSUED JG	3/03/17	SCALE	1:4	SHEET 1 OF 1